

* Note1: C155 is mis-labeled as C153

** Note2: C163 is mis-labeled as C169

Note 3: C151 and C172 are on the FOIL Side of the Board!

Reference: ACC2 Jack

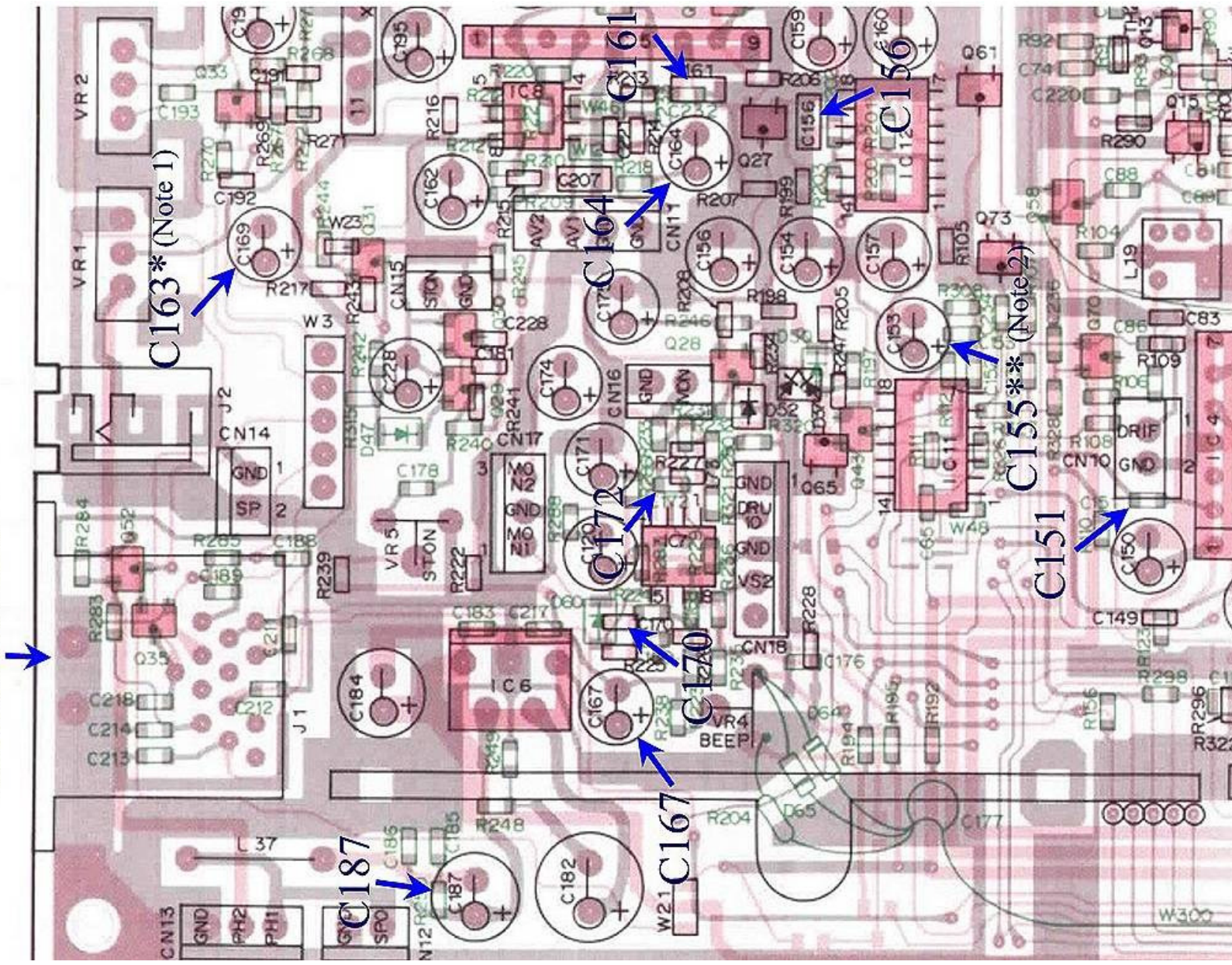


PHOTO C151

.047uF changes to 1uF

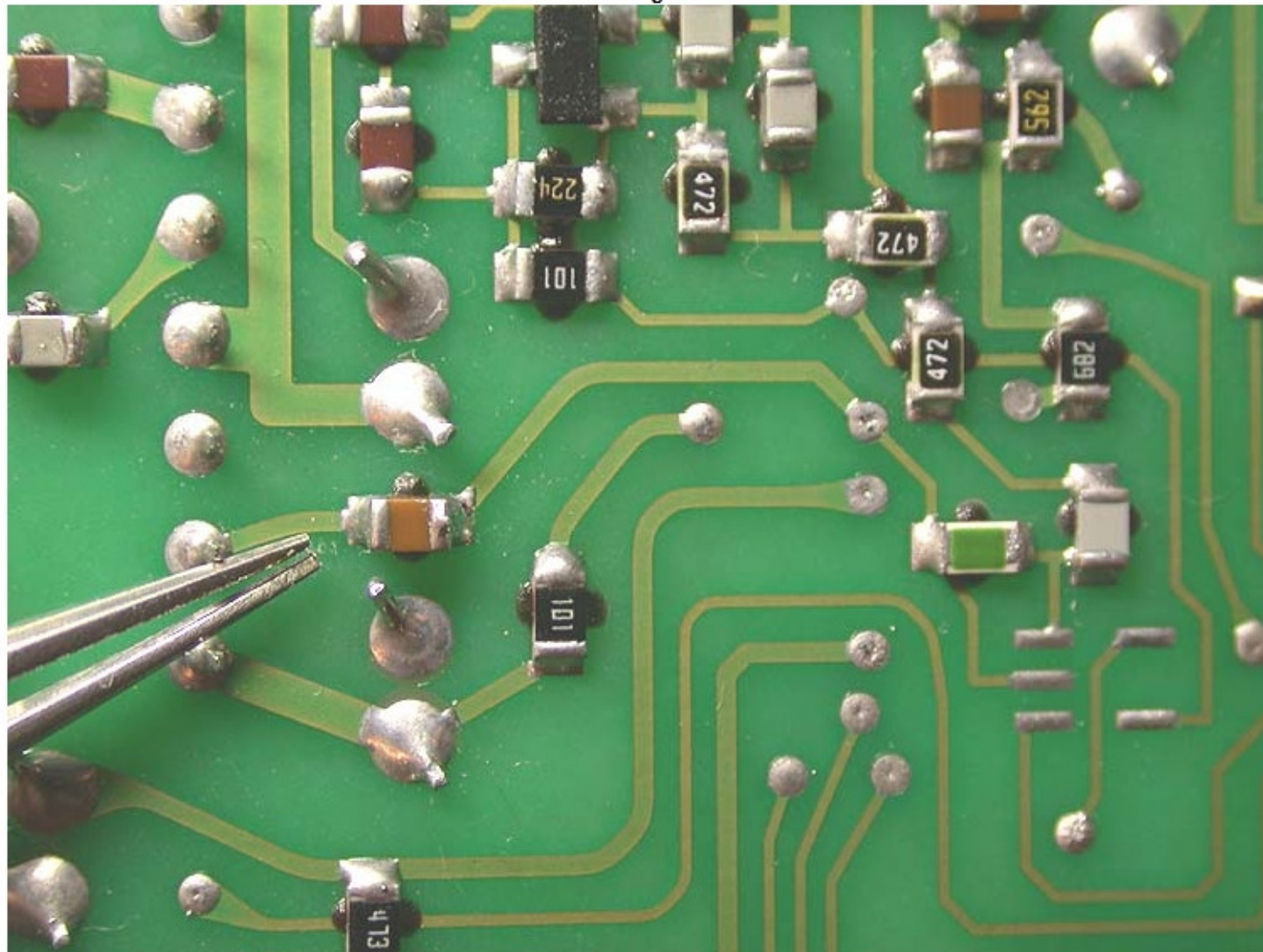


Photo courtesy of W5JAY

Copyright 2002 W5JAY - All rights reserved

PHOTO C155

1uF changes to 10uF

Top side of the board. The product detector is C155. C155 is a 1uF electrolytic that is replaced with a 10uF unit.

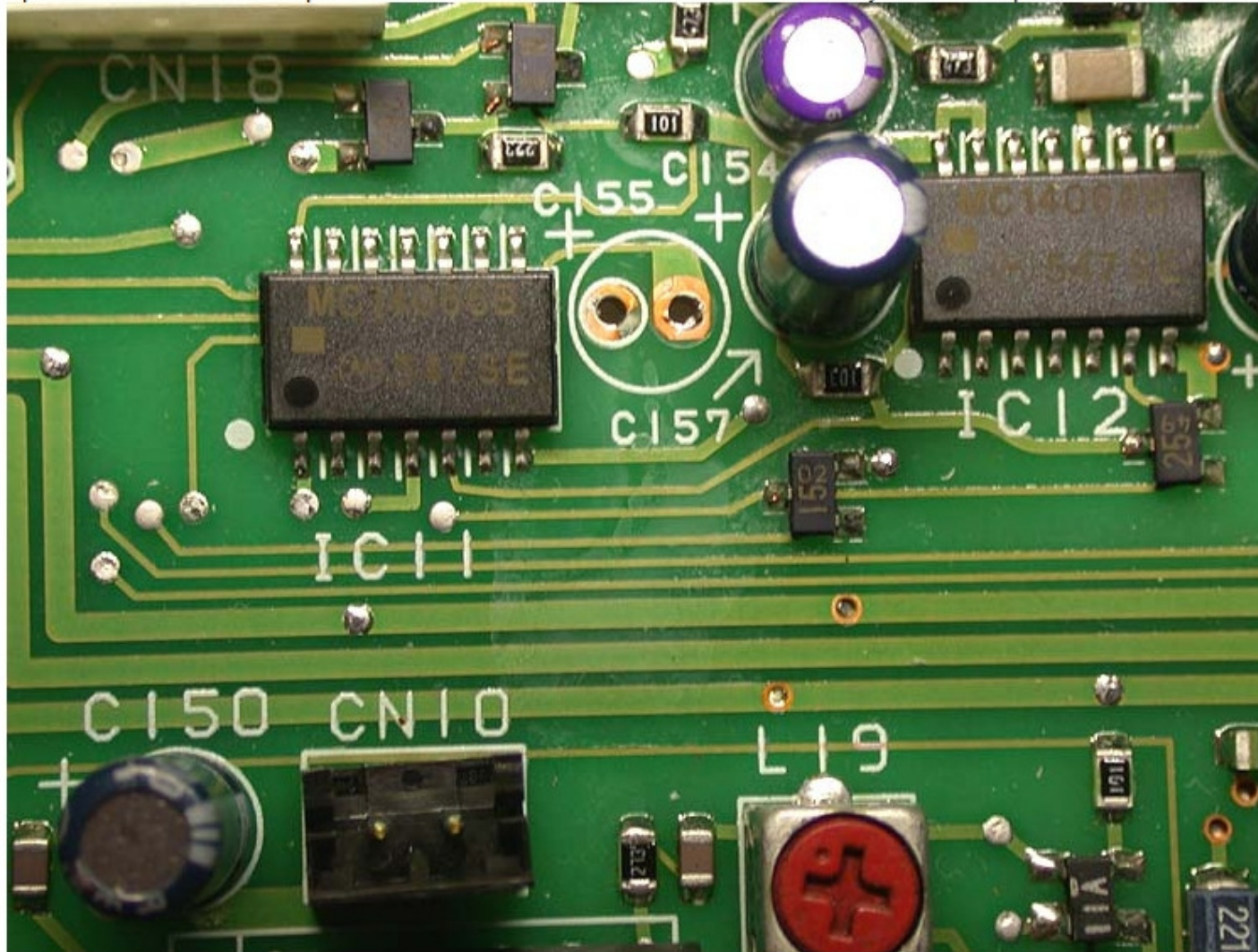


Photo courtesy of W5JAY

Copyright 2002 W5JAY - All rights reserved

PHOTO C156

.1uF changes to 1uF

Used the bigger mica chip componet 1206 series.

The value is change from .1 to 1uF. The TS-850 uses both the smaller 0805 series SMT capacitors as well as the bigger 1206. All SMTs are replaced with 1uF values.

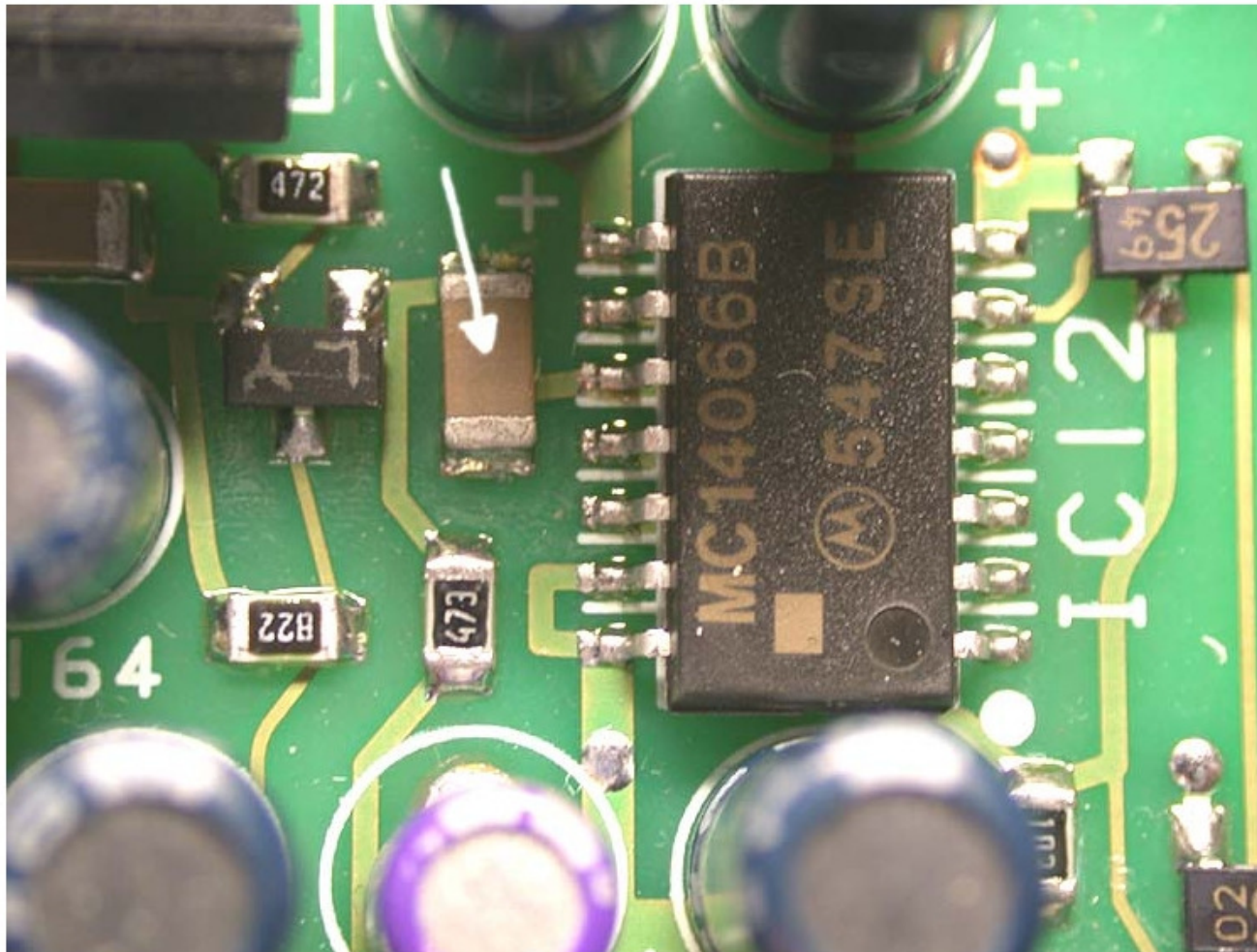


Photo courtesy of W5JAY

Copyright 2002 W5JAY - All rights reserved

PHOTO C161

.1uF changes to 1uF

This is a after shot of both C156 and C161. Notice that C164 eletrolytic is still left out.

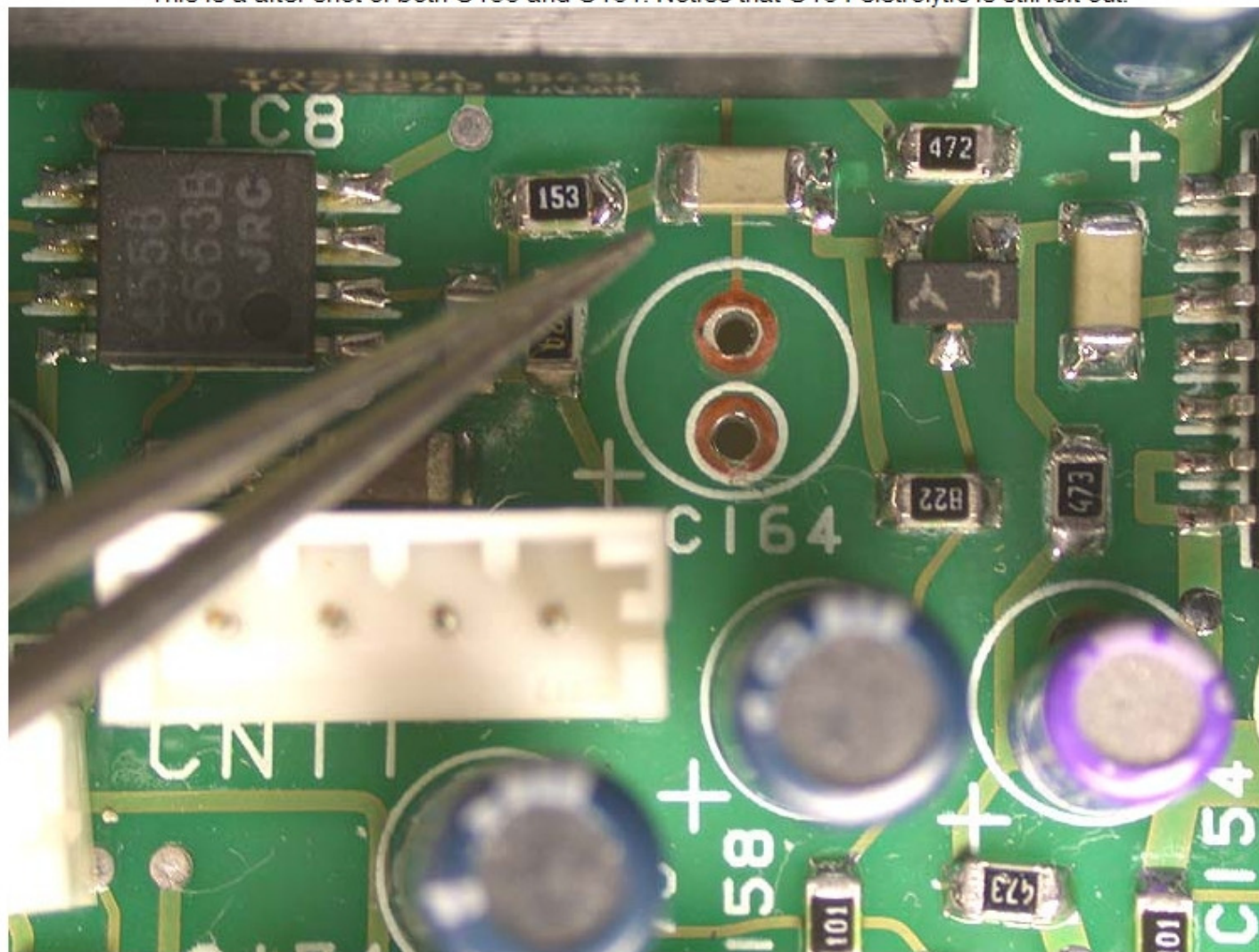


Photo courtesy of W5JAY

Copyright 2002 W5JAY - All rights reserved

PHOTO C163

C163 is changed from 1uF to a 10uF electrolytic.

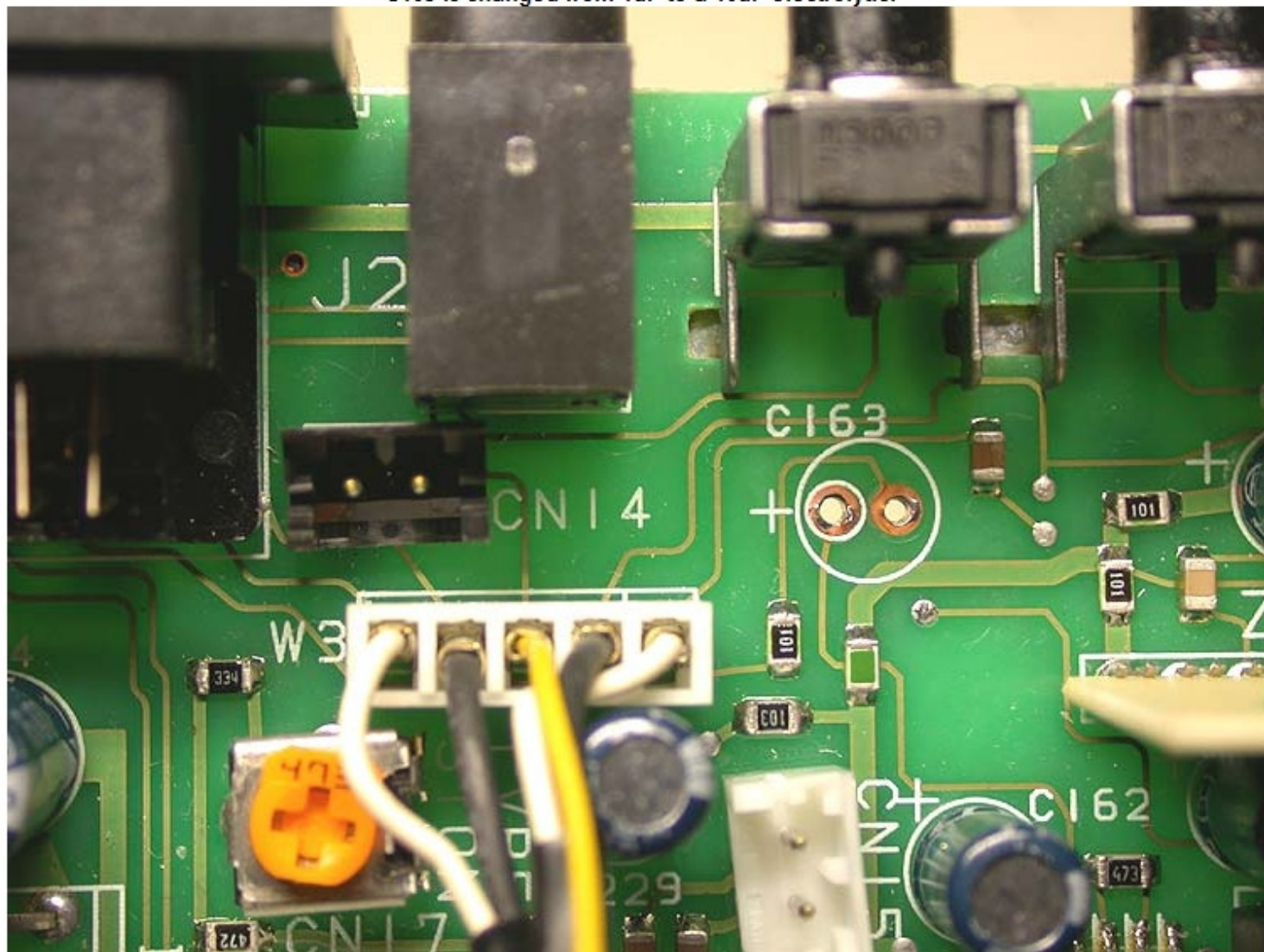


Photo courtesy of W5JAY

Copyright 2002 W5JAY - All rights reserved

PHOTO C164

.1uF changes to 1uF

Remove C164, which is a .1uF electrolytic, but do not replace yet.

Right above C164, is another chip capacitor C161. ([See Photo C161](#)) It is best to replace C161 now with a 1uF 1206 series surface mount capacitor. C161 was a .1 SMT.

Notice C161 is removed and if you look to the right you will see C156 is the previous step.

Leave out C164 for now.

Note: Disregard the Yellow bridged Tantalum capacitor in this photo. It is C207 and does NOT need to be replaced or bridged!

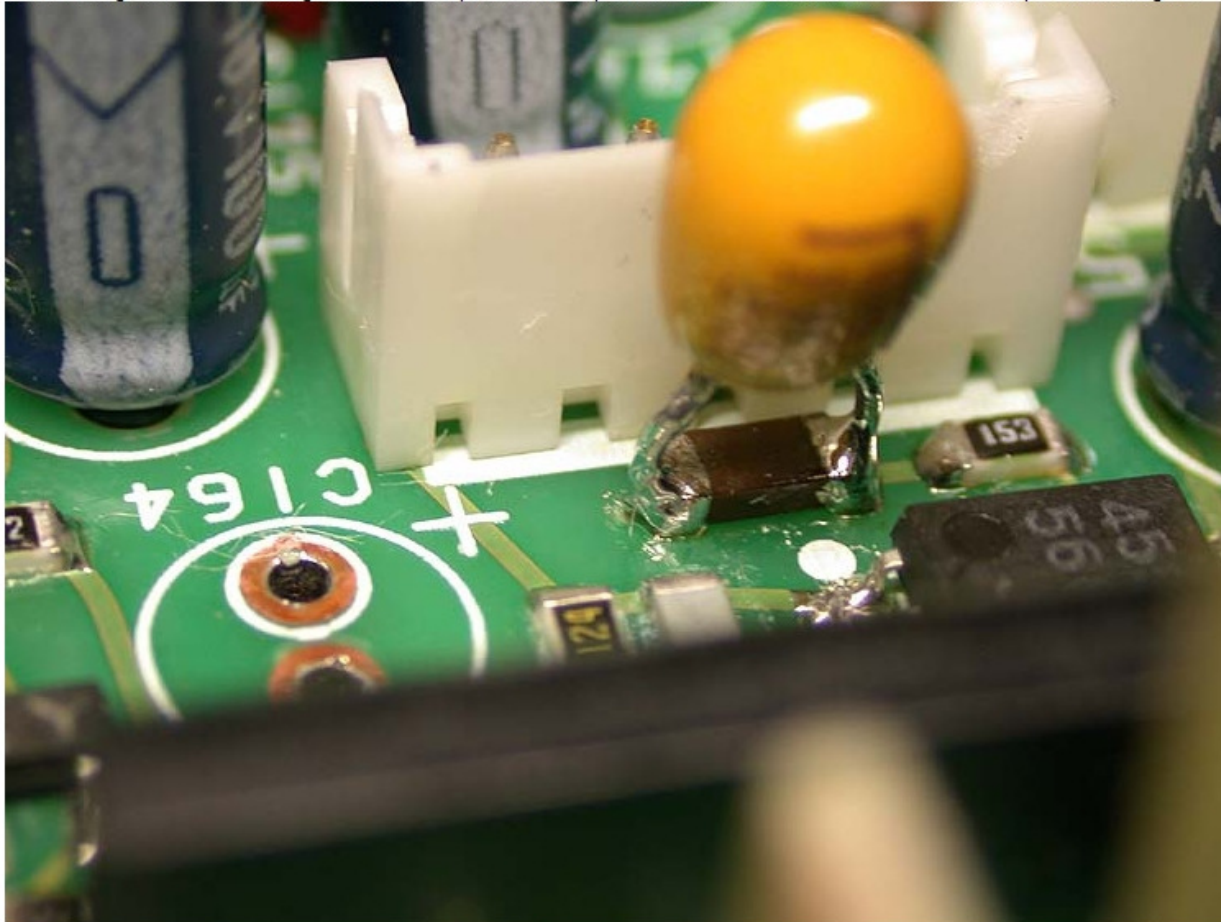


Photo courtesy of W5JAY

Copyright 2002 W5JAY - All rights reserved

PHOTO C167

47uF changes to 100uF

C167 is the input capacitor of LM-386/uPC2002v audio power amp chip.

You can also see the heatsink that the audio amplifier is clipped to.

You might want to leave out C167 until you replace C170.

C170 is another SMT that is part of the monitor circuit.

The shot below shows where C170 is also just above the chip labeled "333".

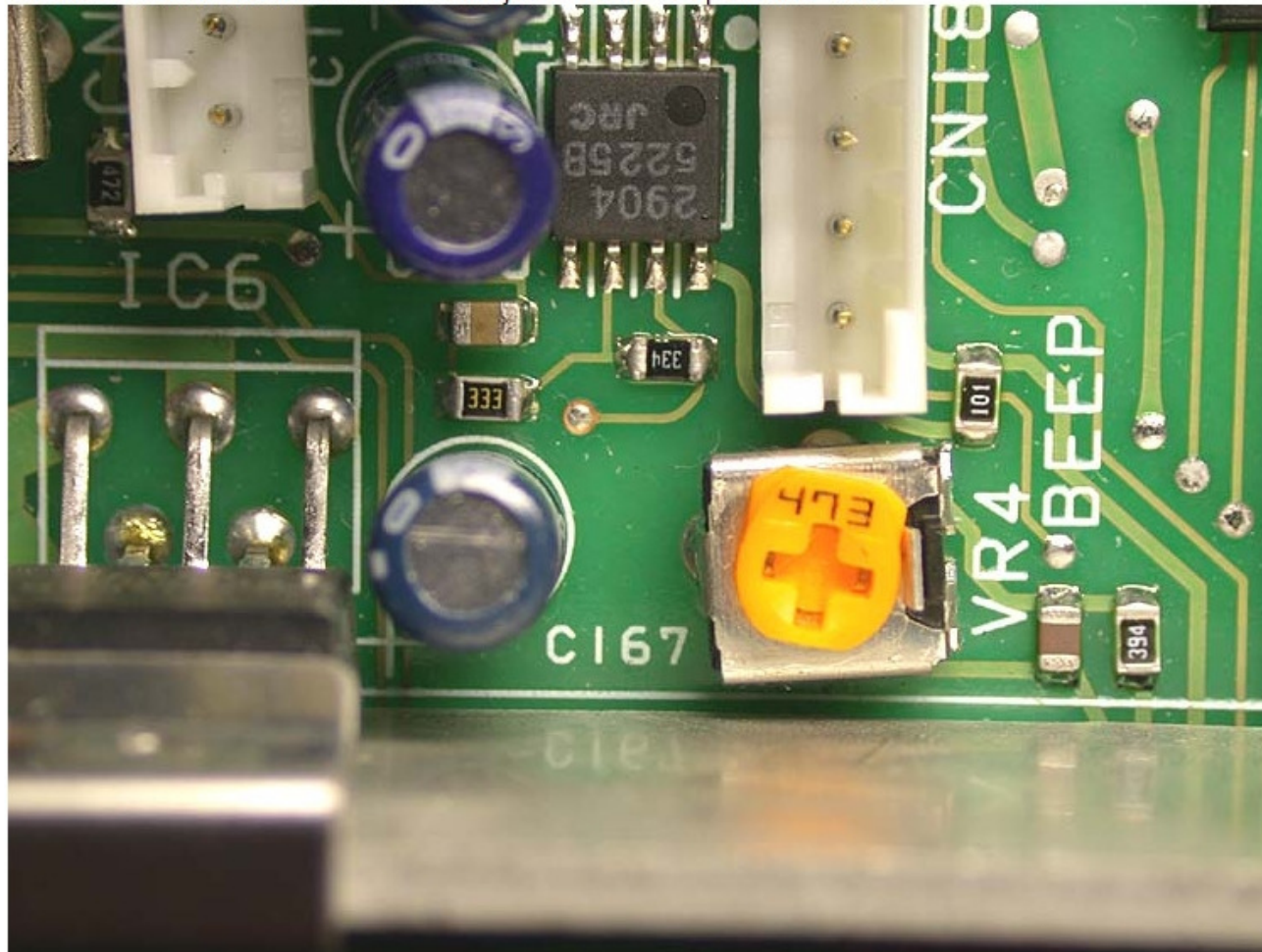


Photo courtesy of W5JAY

Copyright 2002 W5JAY - All rights reserved

PHOTO C170

C170 - 0.1uF changes to 1 uF

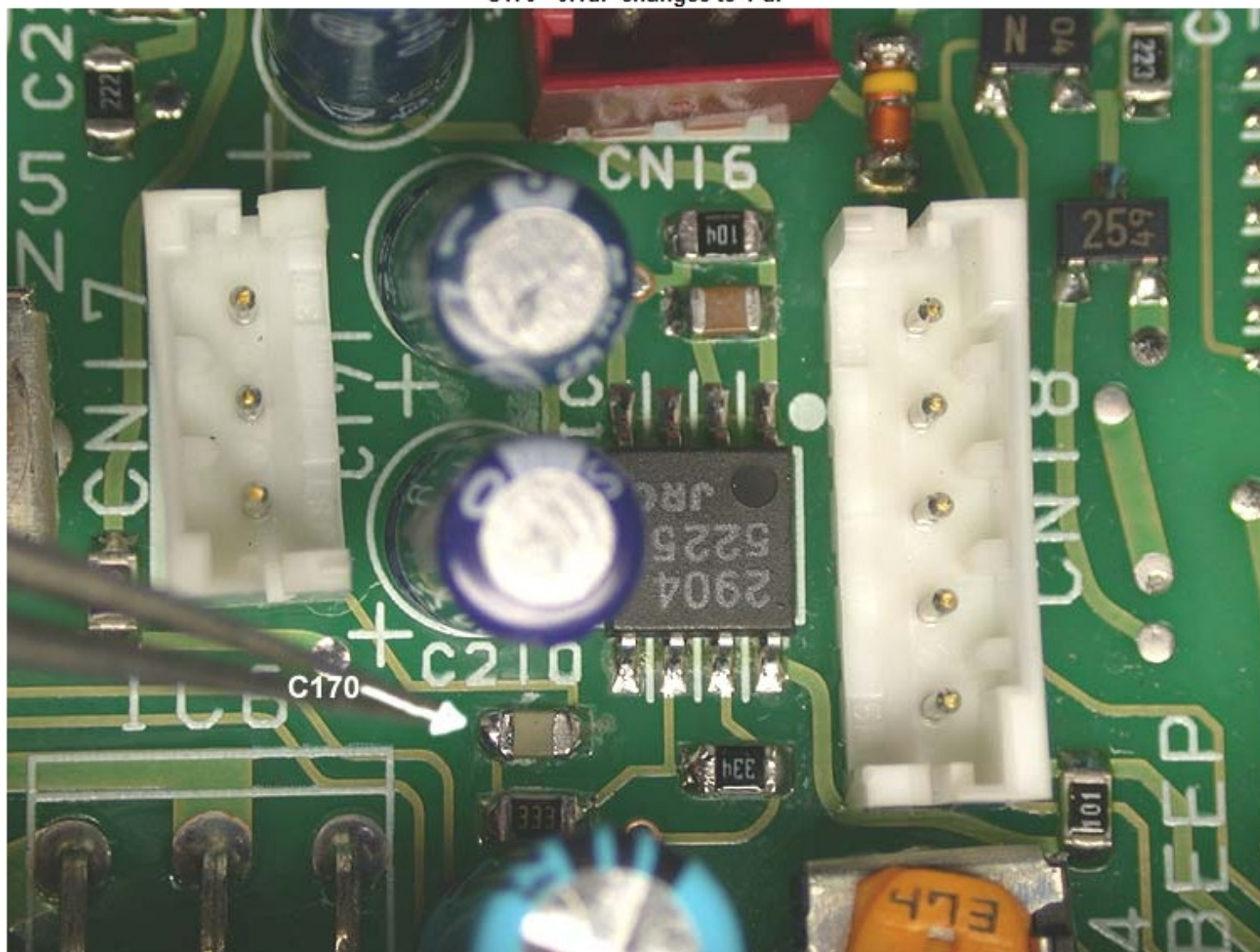


Photo courtesy of W5JAY

Copyright 2002 W5JAY - All rights reserved

PHOTO C172

Changed from .1uF to 1uF. C172 is a 0805 series SMT
C172 is the other capacitor for monitor circuit.

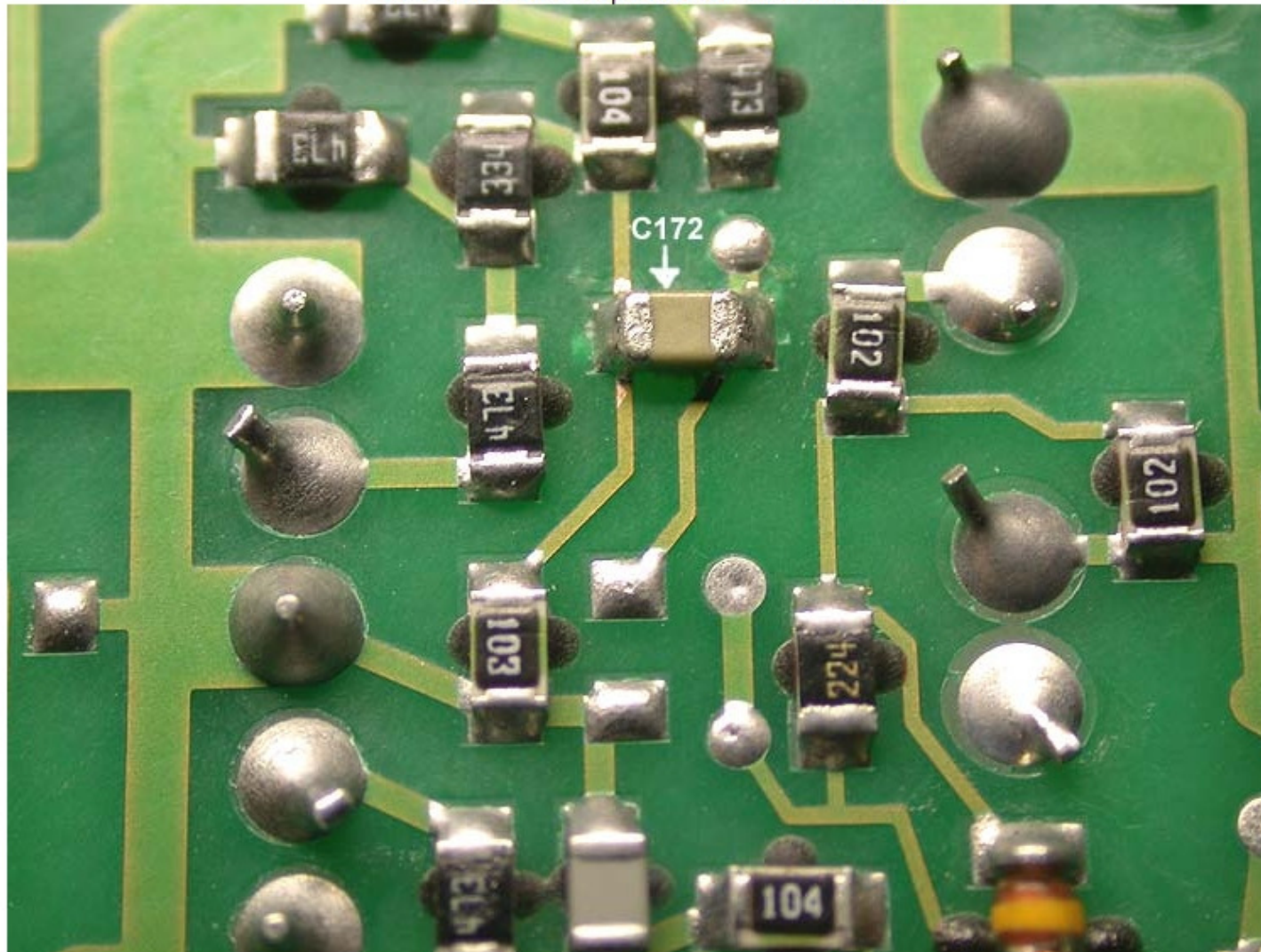


Photo courtesy of W5JAY
Copyright 2002 W5JAY - All rights reserved

PHOTO C187

470uF changes to 1000uF

The new C187 capacitor is slightly bigger.

So the best thing to do is remove the feedback capacitor C182 at the same time.

Install C187 very carefully because it is right up against a wire Molex connector.

Then reinstall C182 by carefully pressing back into the original hole.

You must take your time here because everything is very tight.

This capacitor is a 16 volt version because the higher value voltage capacitors are very hard to install or to big to install.

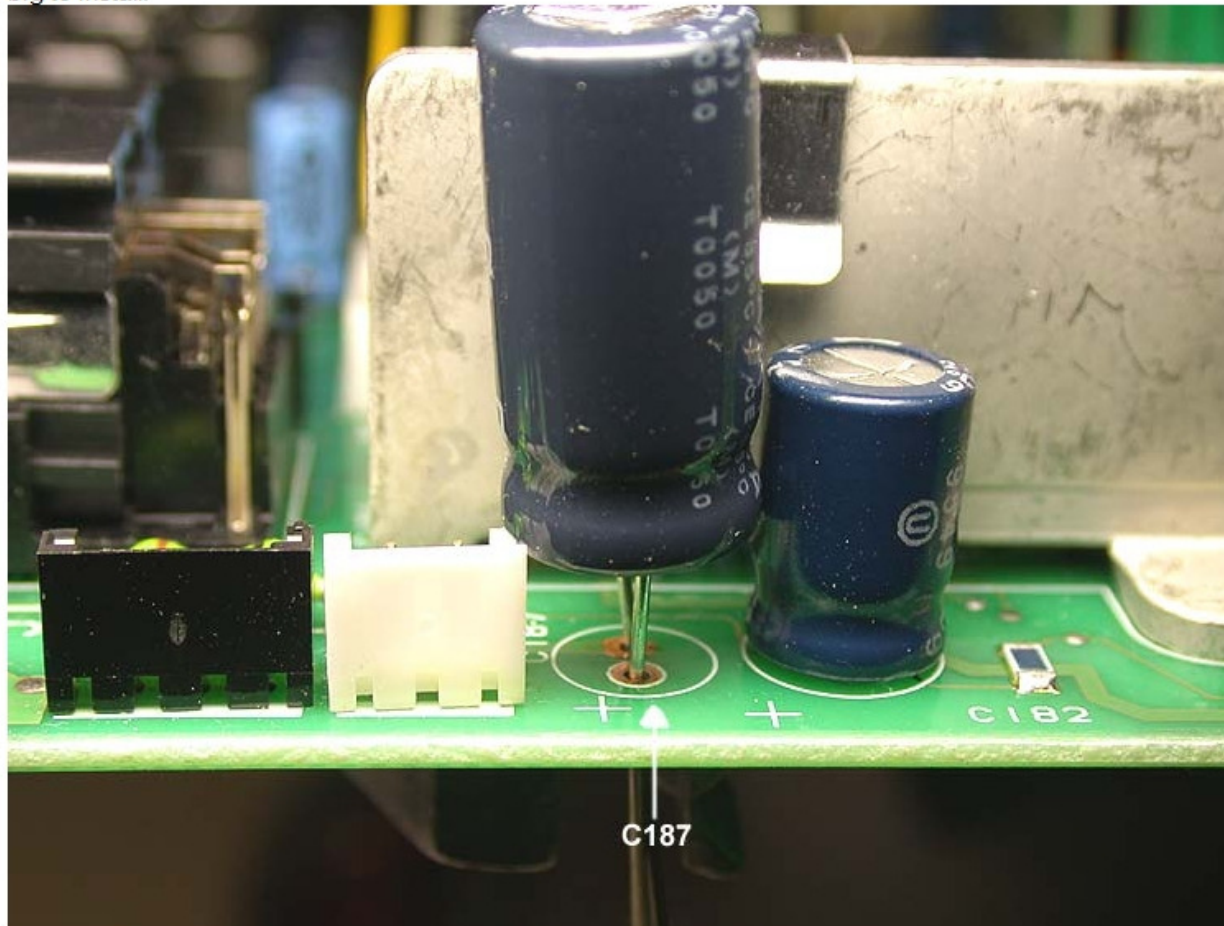


Photo courtesy of W5JAY
Copyright 2002 W5JAY - All rights reserved

Kenwood TS-850 w/DSP-100 Receiver Modifications Before/After Mods

850 Receiver i.f. Filter Controls: 8.83MHz Off / 455kHz @ 12k

