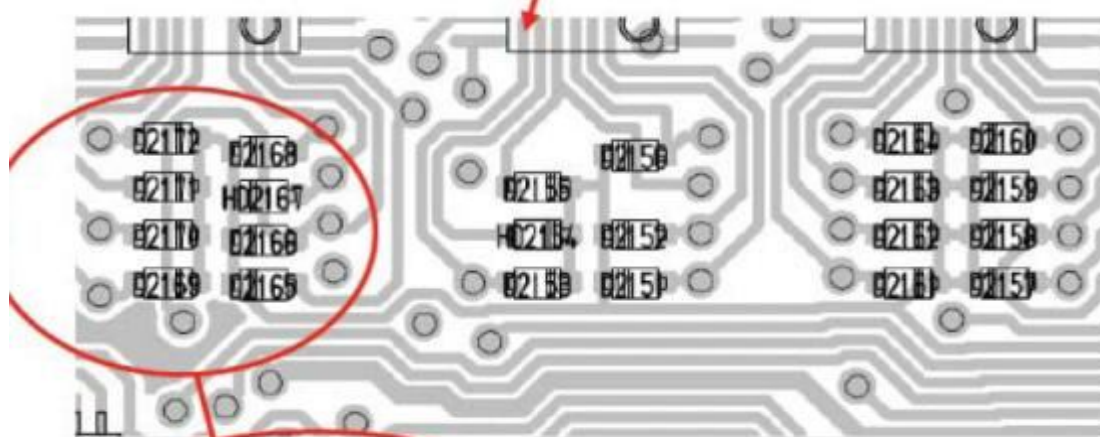
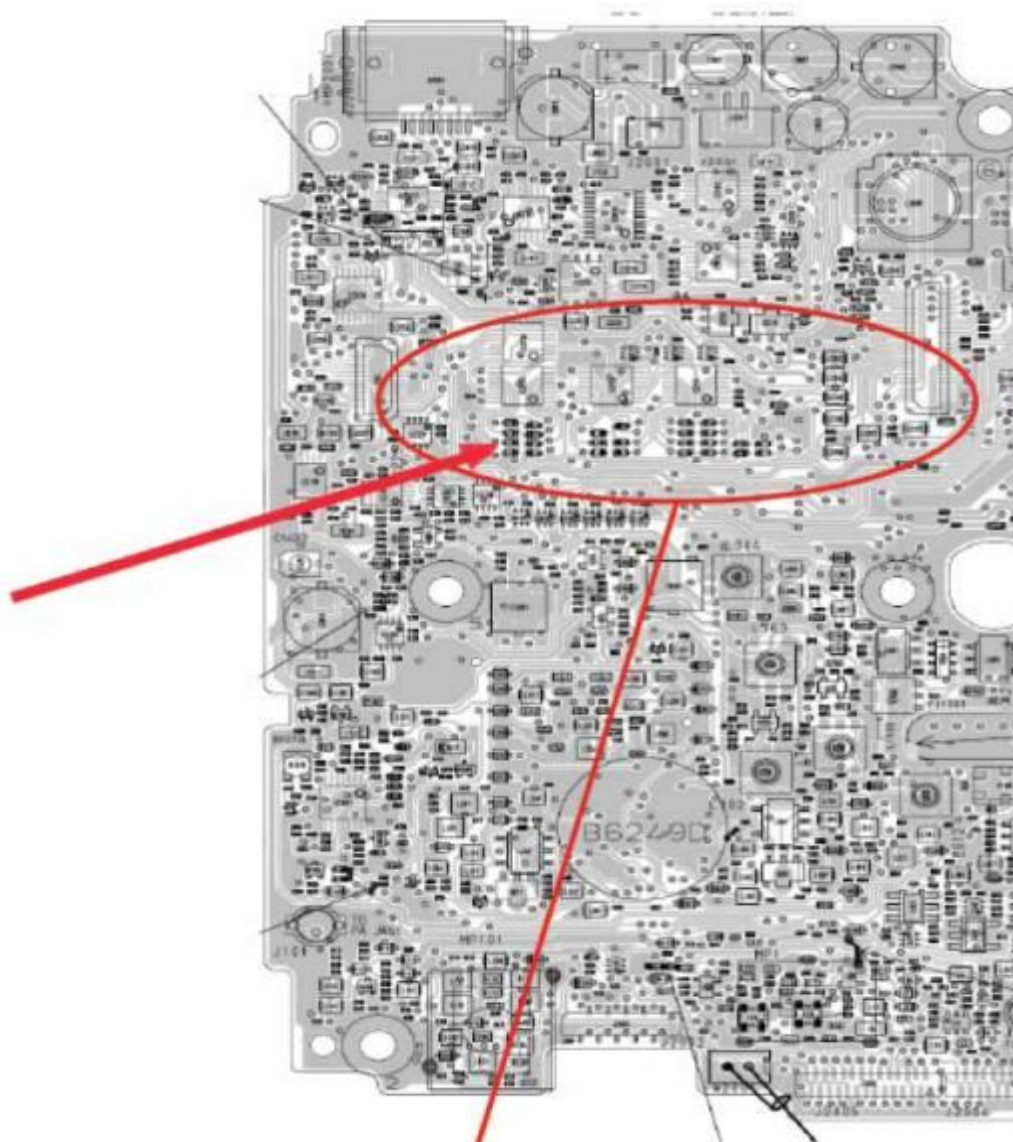


Following information is regarding the modification of expanding the TX frequency coverage of the IC-7000

- Remove the 8 screws from the upper cover (not the screws of the loudspeaker)
- Remove the 2 screws of the module (down left and up right) and remove the module
- The diode-matrix is visible with D2168, D2169, D2170 en D2172 in place
- Remove all diodes (3) except D2170

	D2168	D2169	D2170	D2171	D2172	
1	NO	NO	NO	NO	NO	1.6 - 25.999999 MHz 28.0 - 29.999999 MHz 50.0 - 54.000000 MHz 144.0 - 146.000000 MHz 430.0 - 440.000000 MHz
2	NO	YES	NO	NO	NO	1.6 - 54.000000 MHz 118.0 - 174.000000 MHz 400.0 - 470.000000 MHz
3	NO	NO	YES	NO	NO	0.1 - 199.999999 MHz 400.0 - 470.000000 MHz
*****Initial Diode Matrix geleverd in Europa***** Diode Matrix Condition on the MAIN UNIT						
	D2168	D2169	D2170	D2171	D2172	
	YES	YES	YES	NO	YES	





D2172	D2168
D2171	D2167
D2170	D2166
D2169	D2165