

Please read this installation guide before installing the USB driver.

- This installation guide describes how to install the USB driver included in the Icom product's CD. If you download the USB driver from the Icom Download Service, specify the folder to store the driver.

TABLE OF CONTENTS

1. OVERVIEW	1	3. DRIVER INSTALLATION	3
System requirements	1	4. COM PORT CONFIRMATION	4
2. PRECAUTIONS	2	5. FOR YOUR REFERENCE	5-6
Before connecting to the PC	2	COM Port setting	5
Important	2	Uninstalling the driver	6
After installation	2	Audio considerations	6
About compatible products	2		

1. OVERVIEW

System requirements

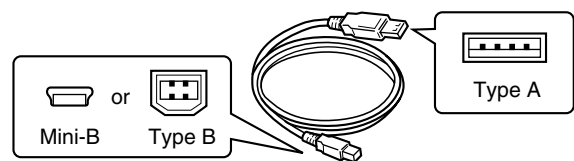
To install the driver, the following hardware and software are required:

PC

- Microsoft® Windows® 8 (32/64 bit)*, Microsoft® Windows® 7 (32/64 bit), Microsoft® Windows Vista® (32/64 bit) or Microsoft® Windows® XP (32 bit) OS
- *Except for Microsoft® Windows® RT.
- A USB 1.1 or 2.0 port

Cable

- A USB cable



NOTE:

- Icom is not responsible for problems using a PC with an above OS installed.
- The USB driver cannot be used with the 64 bit version of Microsoft® Windows® XP.
- In this installation guide, the above OSs are described as "Windows 8," "Windows 7," "Windows Vista" and "Windows XP."
- The descriptions in this guide are based on Windows 8.

NOTE:

- Depending on the length of the USB cable, the transceiver may not be recognized by the PC if you use a 3rd party USB cable. Use as short a cable as possible.
- Depending on the transceiver, the USB port shape may differ. If you use a 3rd party USB cable, be sure to check the port shape, before purchasing the cable.
- This guide is based on using a Type B USB cable.

Before installation:

- When installing the driver, log on as the administrator.
- Make sure no other applications are running.

2. PRECAUTIONS

Before connecting to the PC

The USB driver is not supported by the automatic recognition system, so **NEVER** connect the USB cable between the transceiver and the PC until AFTER the USB driver has been installed.

See "Driver installation" on page 3 for details.

- Once the driver is installed, a PC software can be used by just connecting the USB cable.

Important

- Depending on your PC performance (OS, environment, and so on), the USB audio may be interrupted, or a control by the PC software may get delayed.
- If the CPU has a heavy load, the USB audio is easily interrupted.
- The settings of the installed audio player may be changed after connecting the transceiver to the PC.
- Icom is not responsible for improper operation when connecting the transceiver and the PC through a USB hub.

After installation

• Uninstalling the USB driver

You cannot uninstall the USB driver for each individual unit. After uninstalling the USB driver, none of the transceivers that require this driver can be operated with the PC.

• When another transceiver is connected

The COM port number is automatically added after turning ON the transceiver's power.

About compatible products

The products that require this driver are shown on the Icom website (<http://www.icom.co.jp/world/index.html>).

3. DRIVER INSTALLATION

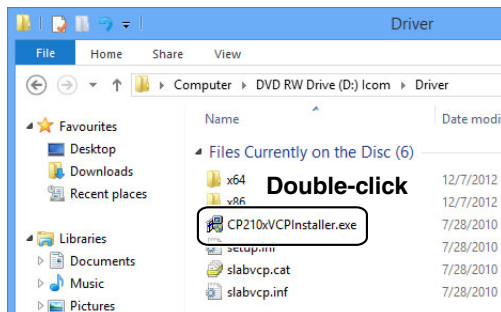
This description is based on Windows 8.

NOTE:

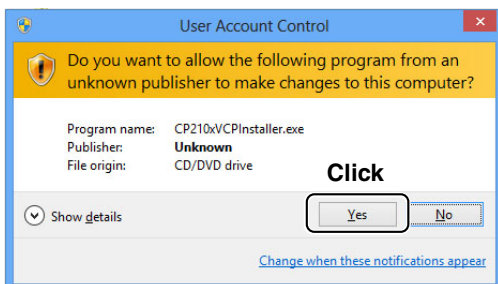
- **NEVER** connect the USB cable between the transceiver and the PC until AFTER the USB driver has been installed.
- This USB driver is not supported by the automatic recognition system.

/// The displayed dialogue boxes, indications or operations may differ slightly from the following instructions, depending on your system version and settings.

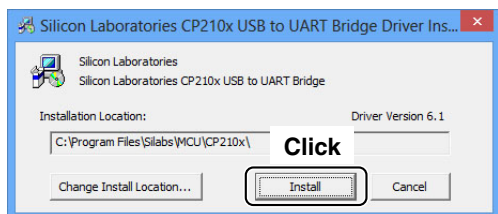
- ① Make sure that the transceiver and PC are not connected.
- ② Start Windows.
 - Quit all other applications if any are running.
- ③ Double-click the “CP210xVCPInstaller.exe” in the “Driver” folder to open the USB driver installer.



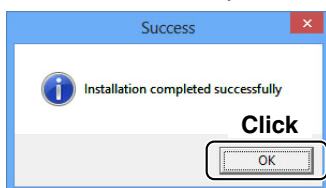
- ④ When the “User Account Control” dialogue box appears, click [Yes].



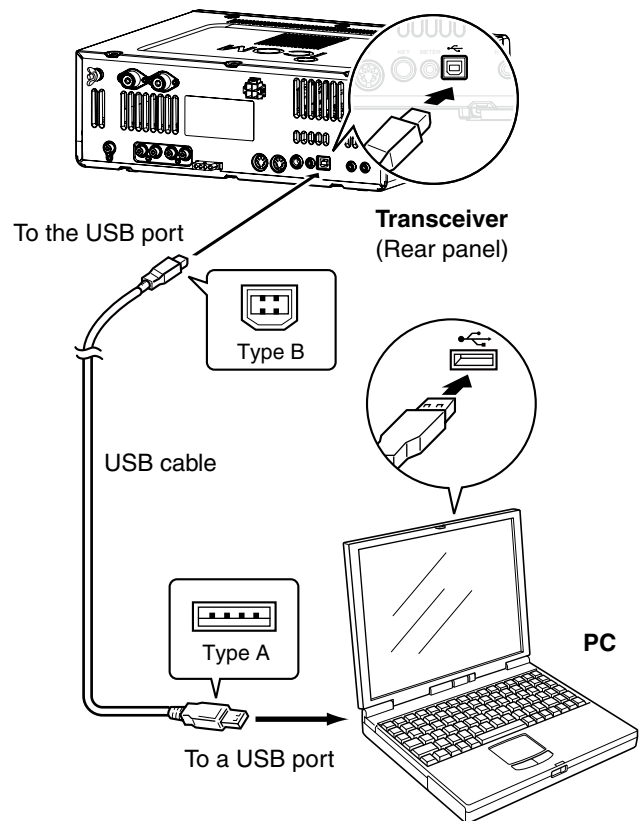
- ⑤ Verify the installation location, then click [Install].



- ⑥ Windows starts installing the driver.
- ⑦ After the installation has completed, click [OK].



- ⑧ Connect the USB cable between the transceiver and the PC, as shown below.
 - Be sure to check the USB cable connector shape.



- ⑨ The installation icons appear on the taskbar shown below, then Windows starts installing the driver.
 - The USB audio driver is also automatically installed.



- ⑩ After the driver installation has completed, the installation icons disappear.

/// Depending on your system version and settings, you may be prompted to restart the PC. In this case, follow the instructions on the screen.

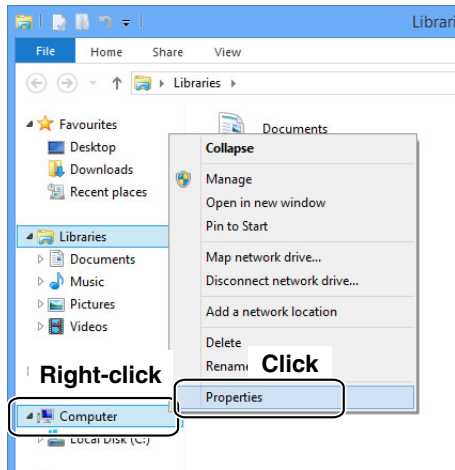
4. COM PORT CONFIRMATION

After the driver installation has been completed, confirm the port connection and port number.
This description is based on Windows 8.

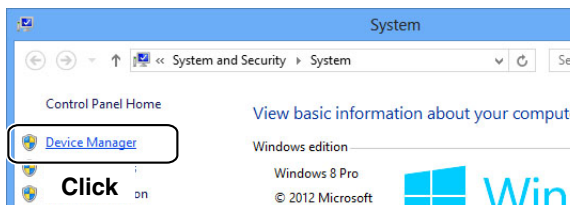
- ① Click the folder icon on the taskbar.



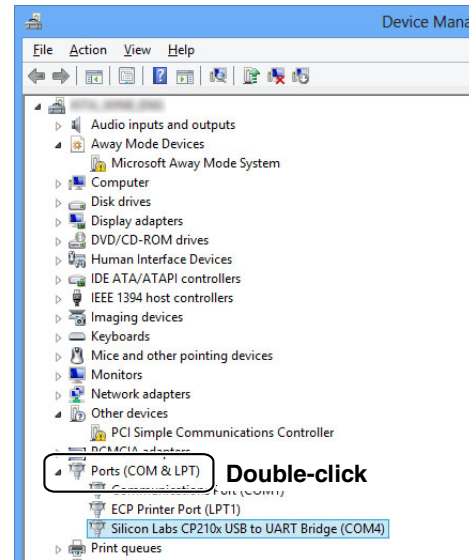
- ② Right-click “Computer,” and then click “Properties.”



- ③ Click [Device Manager].
- “Device Manager” appears.



- ④ Double-click “Ports (COM&LPT)” on the “Device Manager” screen.



- When the driver is completely installed, “Silicon Labs CP210x USB to UART Bridge (COM*)” is displayed. The screen shows the USB serial COM port number “4.”

- The COM port number is displayed instead of “*”. If the transceiver has two COM ports, two COM port numbers are displayed.
- Depending on the PC environment, the COM port number may differ.
- If “!” or “x” is displayed on the “Device Manager” screen, the driver may not be properly installed. In such a case, first uninstall the USB driver, then reinstall it.

5. FOR YOUR REFERENCE

After the PC and transceiver are connected, you can remotely control the transceiver using the CI-V commands. The transceiver has a conversion function between USB and Serial. So, if the transceiver is connected to a PC with the USB cable, the CT-17 is not required for the Icom Communications Interface-V (CI-V) operation. The [USB] port and [REMOTE] jack can simultaneously be used. So CI-V operation can be done from a PC, even if an Icom CI-V product, such as a transceiver, a receiver or a linear amplifier (IC-PW1), is connected to the [REMOTE] jack of your transceiver.

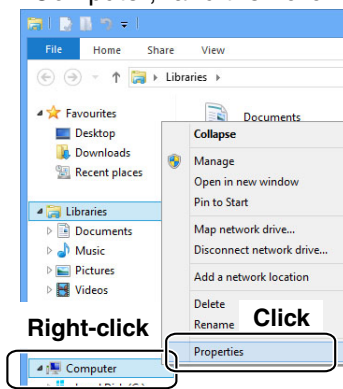
COM Port setting

To change the COM Port number setting, connect the transceiver to the PC and then turn ON the transceiver power after the driver installation has been completed. This description is based on Windows 8.

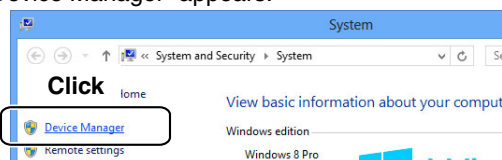
- ① Click the folder icon on the taskbar.



- ② Right-click "Computer," and then click "Properties."

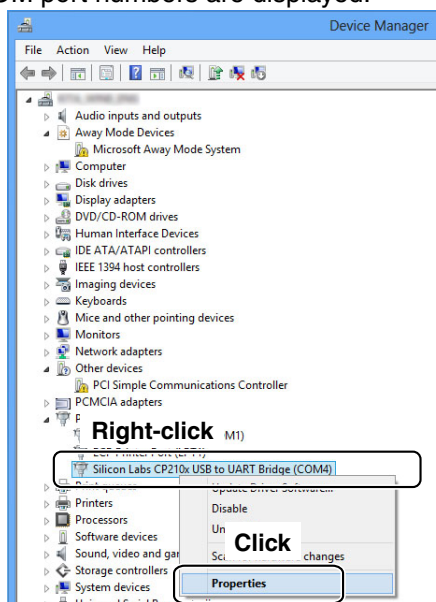


- ③ Click [Device Manager].
• "Device Manager" appears.

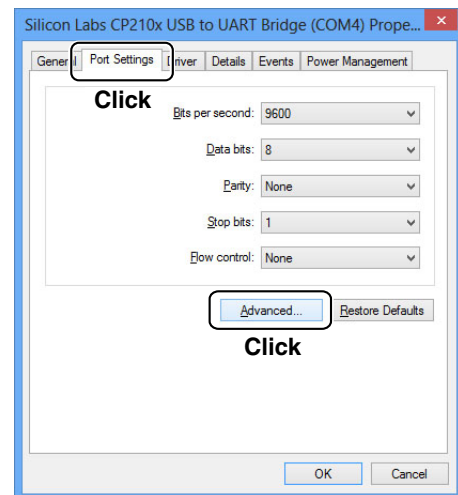


- ④ Right-click "Silicon Labs CP210x USB to UART Bridge (COM*)" and then click "Properties."

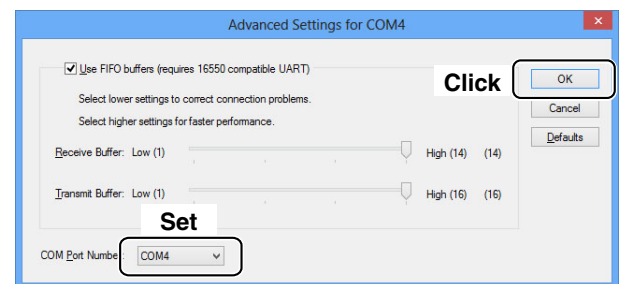
/// The COM port number is displayed instead of
/// "*". If the transceiver has two COM ports, two
/// COM port numbers are displayed.



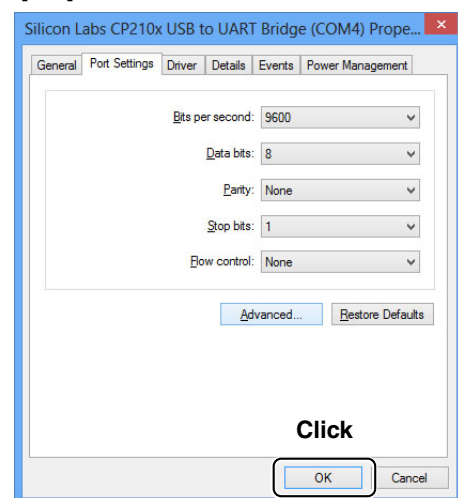
- ⑤ Click the [Port Settings] tab, then click [Advanced...].



- ⑥ Set the desired COM port number, then click [OK].



- ⑦ Click [OK] to close the screen.



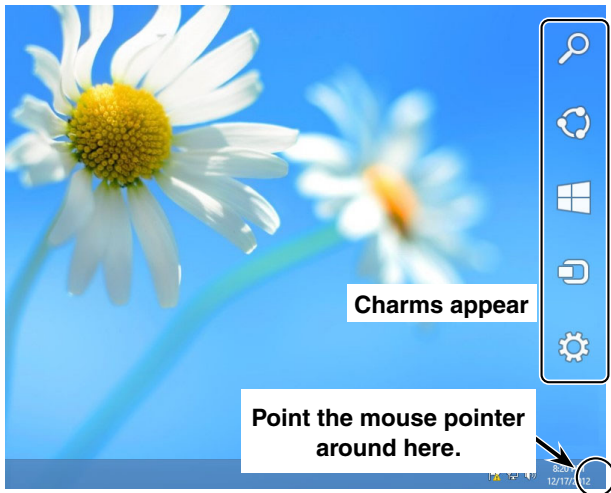
5. FOR YOUR REFERENCE

Uninstalling the driver

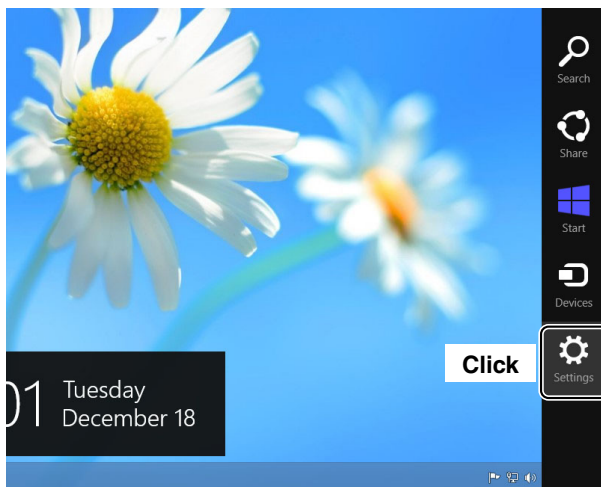
The displayed dialogue boxes or indications may differ slightly from the following instructions, depending on your system version and settings.

This description is based on Windows 8.

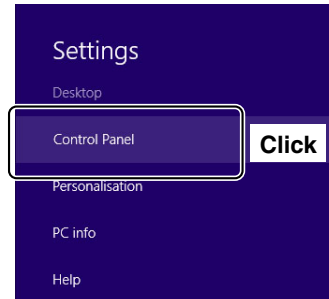
- ① Start Windows.
- ② Point the mouse pointer around the right-bottom corner of the screen.
 - The charms appear on the right of the screen.



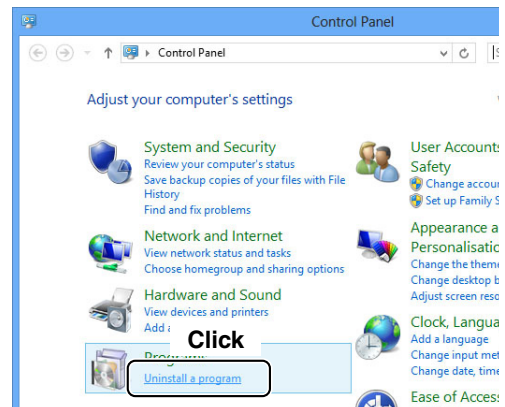
- ③ Click the “Settings” charm.



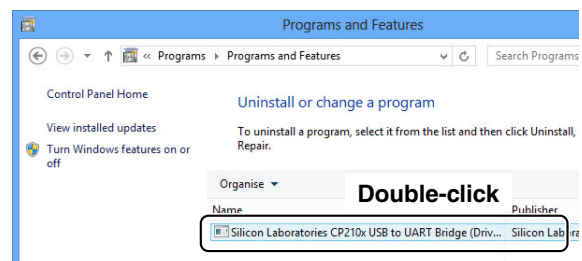
- ④ Click the “Control Panel.”



- ⑤ Click the “Uninstall a program.”
 - The “Uninstall or Change a Program” menu appears.



- ⑥ Double-click “Silicon Laboratories CP210x USB to UART Bridge (DriverRemoval).”



- ⑦ Follow the instructions on the screen to uninstall.

Audio considerations

[Installed audio player] (Windows standard software, and so on.)

For modulation input from the PC, the transceiver's USB port must be selected as the modulation input source connector.

You can set the modulation input source connector in the Set mode, or using the CI-V system.

See the appropriate page in the transceiver's instruction manual for details.

If you monitor the PC's received audio from an external PC speaker, or use the audio from an external PC microphone as the modulating input, read the instruction manual that comes with the software for details.

Please read this installation guide before installing the USB driver.

- This installation guide describes how to install the USB driver included in the Icom product's CD. If you download the USB driver from the Icom Download Service, specify the folder which the driver is stored in.

TABLE OF CONTENTS

1. OVERVIEW	1	3. DRIVER INSTALLATION	3
System requirements	1	4. COM PORT CONFIRMATION	4
2. PRECAUTIONS	2	5. FOR YOUR REFERENCE	5-6
Before connecting to the PC	2	COM Port setting	5
Important	2	Uninstalling the driver	6
After installation	2	Audio considerations	6
About compatible products	2		

1. OVERVIEW

System requirements

To use the software, the following hardware and software are required:

PC

- Microsoft® Windows® 7 (32/64bit), Microsoft® Windows Vista® (32/64bit) or Microsoft® Windows® XP (32 bit) OS
- A USB 1.1 or 2.0 port

NOTE:

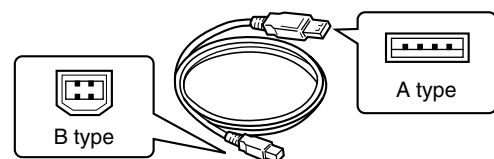
- Icom is not responsible for problems using a PC with the above OS installed.
- The USB driver cannot be used with 64 bit version of Microsoft® Windows® XP.
- In this installation guide, the above OSs are described as "Windows 7," "Windows Vista" and "Windows XP."
- The description on this guide is based on Windows 7.

Before installation:

- When installing the software, log on as the administrator.
- Make sure no other applications are running.

Cable

- A USB cable (A-B type)



NOTE:

Depending on the length of the USB cable, the transceiver may not be recognized by the PC if you use a 3rd party USB cable. Use as short a cable as possible.

2. PRECAUTIONS

Before connecting to the PC

The USB driver is not supported by the automatic recognition system, so **NEVER** connect the USB cable between the transceiver and the PC until AFTER the USB driver has been installed.

See the "Driver installation" on page 3 for details.

- Once the driver is installed, the remote control operation is available with just connecting the USB.

Important

- Depending on the PC performance (OS, environment, etc.), the USB audio may be interrupted, or a control by the PC software may get delayed.
- If the CPU has a heavy load, the USB audio is easily interrupted.
- The settings of the installed audio player may be changed after connecting the transceiver to the PC.
- Icom is not responsible for improper operation when connecting the transceiver and the PC through a USB hub.

After installation

• Uninstalling the USB driver

You cannot uninstall the USB driver of each unit. After uninstalling the USB driver, all transceiver which requires this driver installation cannot be operated with the PC.

• When another transceiver is connected

The COM port number is automatically added after turning ON the transceiver's power.

About compatible products

The products which require this driver installation are as shown on the Icom website (<http://www.icom.co.jp/world/index.html>).

3. DRIVER INSTALLATION

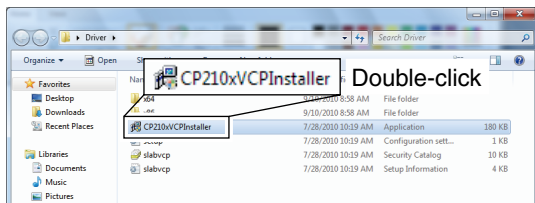
This description is based on Windows 7.

NOTE:

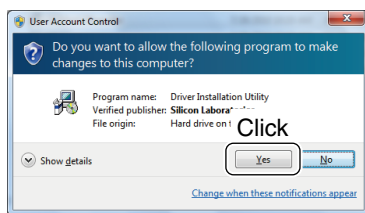
- **NEVER** connect the USB cable between the transceiver and the PC until AFTER the USB driver has been installed.
- This USB driver is not supported by the automatic recognition system.

/// The displayed dialogue boxes, indications or operations may differ slightly from the following instructions, depending on your system version and settings.

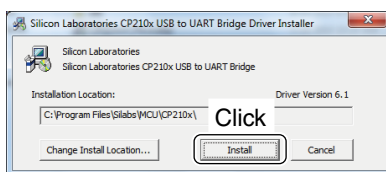
- ① Make sure that the transceiver and PC are not connected.
- ② Start Windows.
 - Quit all other applications if any are running.
- ③ Double-click the “CP210xVCPInstaller.exe” which is stored in the “Driver” folder to open the USB driver installer.



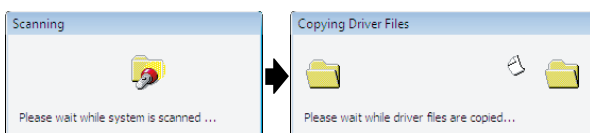
- ④ When “User Account Control” dialogue box appears, click [Yes].



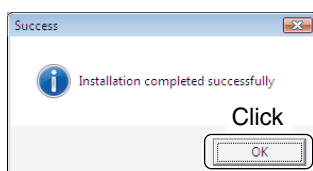
- ⑤ Verify the installation location, then click [Install].



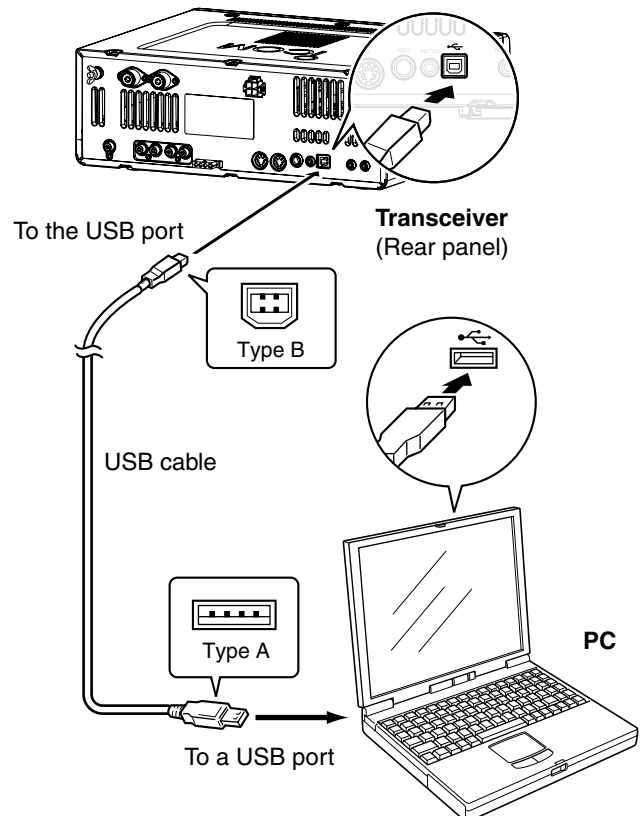
- ⑥ Windows starts scanning for the system, then starts installing the driver.



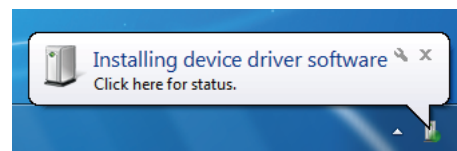
- ⑦ After the installation has completed, click [OK].
 - Restarting the PC is recommended.



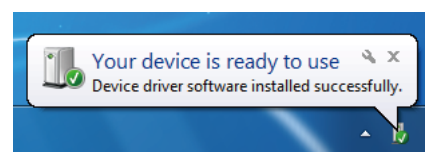
- ⑧ After restarting the PC, connect the USB cable between the transceiver and the PC, as shown below.
 - Be sure to check the USB cable connector shape between Type A and Type B.



- ⑨ Turn ON the transceiver's power.
 - “Installing device driver software” appears.
 - The USB audio driver is also automatically installed.



- ⑩ This dialogue appears when the driver installation has been completed.

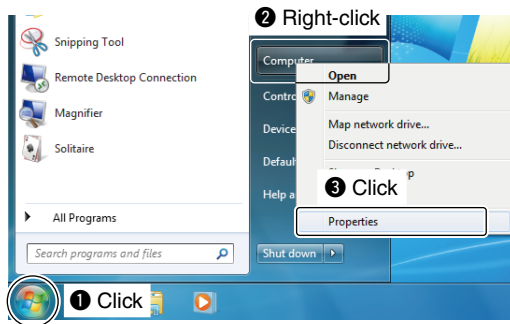


/// Depending on your system version and settings, you may be prompted to restart the PC. In this case, follow the instructions on screen.

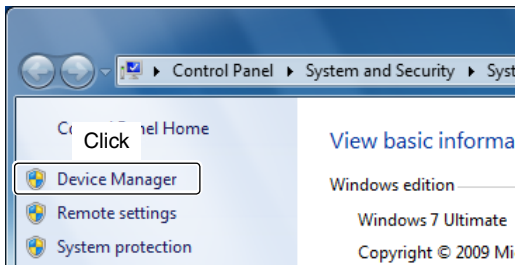
4. COM PORT CONFIRMATION

After the driver installation has been completed, confirm the port connection and port number.
This description is based on Windows 7.

- ① Click the Windows “START” icon.
- ② Right-click “Computer” in the <Start> menu, and then click “Properties.”



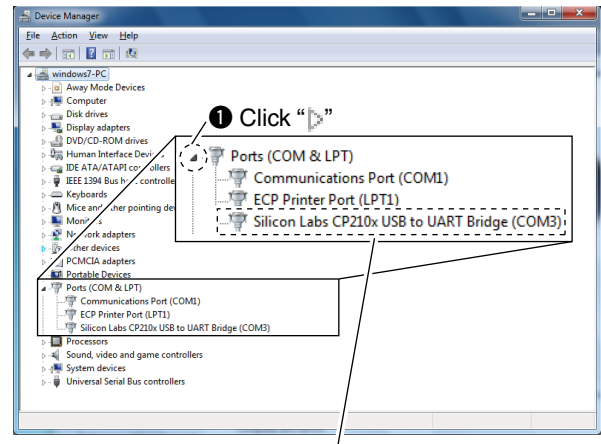
- ③ Click [Device Manager].
 - “Device Manager” appears.



- ④ Click “▶” to the left of “Ports (COM&LPT),” then confirm “Silicon Labs CP210x USB to UART Bridge (COM*)” is displayed.

• If “!” or “x” is displayed on the “Device Manager” screen, the driver may not be properly installed. In such a case, first uninstall the USB driver, then reinstall it.

▨ The COM port number is displayed instead of “*.” If the transceiver has two COM ports, two COM port numbers are displayed.



- ② Check the COM port number.
In this example, the USB serial COM port number is “3.”

5. FOR YOUR REFERENCE

When connected together, you can remotely control the transceiver with a PC using CI-V commands.

The transceiver has a conversion function between USB and Serial. So, if the transceiver is connected to a PC with the USB cable, the CT-17 is not required for the Icom Communications Interface-V (CI-V) operation.

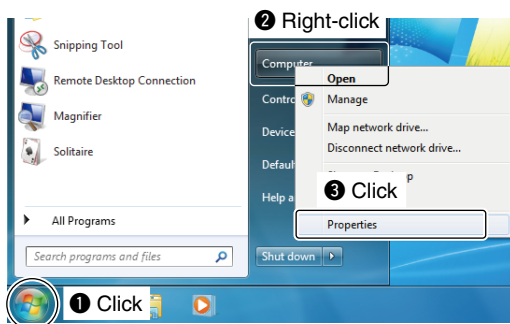
The [USB] port and [REMOTE] jack can be simultaneously used. So CI-V operation is available from a PC, even if the Icom CI-V products, such as transceivers, receivers or linear amplifier (IC-PW1), is connected to the [REMOTE] jack of your transceiver.

COM Port setting

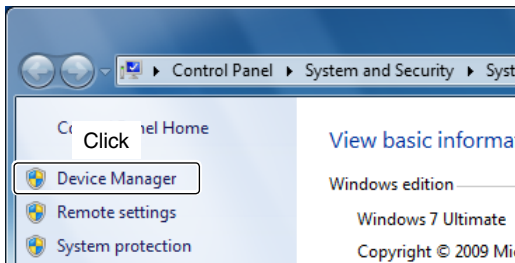
To change the COM Port number setting, connect the transceiver to the PC and then turn the transceiver power ON after the driver installation has been completed.

This description is based on Windows 7.

- ① Click the Windows “START” icon.
- ② Right-click [Computer] in the <Start> menu, and then click [Properties].

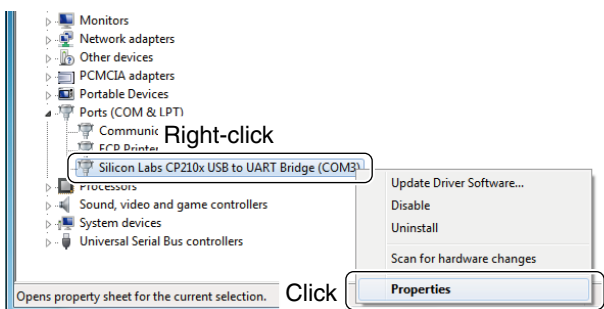


- ③ Click [Device Manager].
 - “Device Manager” appears.

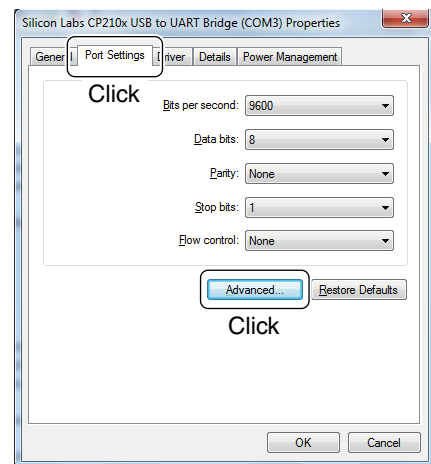


- ④ Right-click “Silicon Labs CP210x USB to UART Bridge (COM*)” and then click “Properties.”

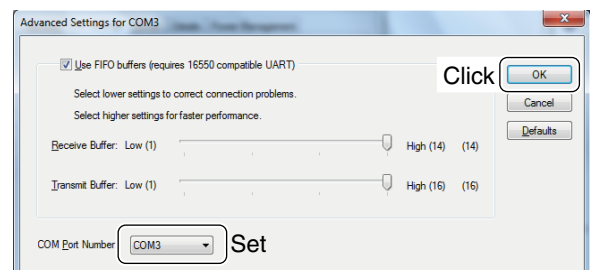
/// The COM port number is displayed instead of “*”. If the transceiver has two COM ports, two COM port numbers are displayed.



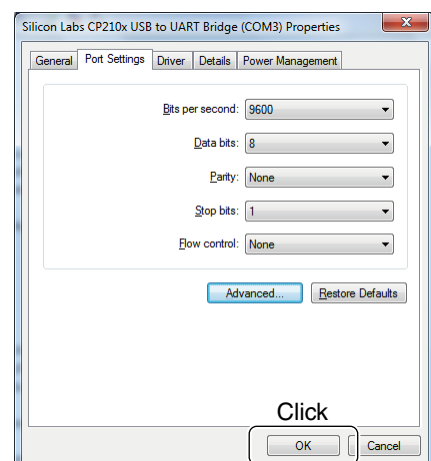
- ⑤ Click the [Port Settings] tab, then click [Advanced...].



- ⑥ Set the desired COM port number, then click [OK].



- ⑦ Click [OK] to close the screen.



5. FOR YOUR REFERENCE

Uninstalling the driver

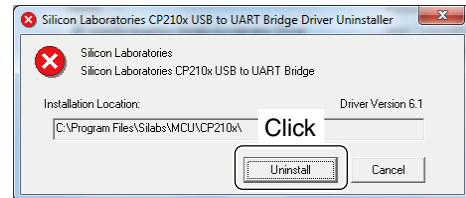
The displayed dialogue boxes or indications may differ slightly from the following instructions, depending on your system version and settings.

This description is based on Windows 7.

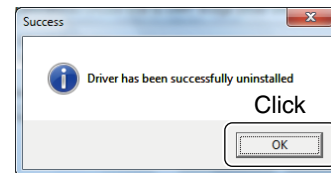
- ① Start Windows.
- ② Select the “Control Panel” in the Start menu.
 - The control panel appears.
- ③ Click the “Uninstall a program.”
 - The “Uninstall or Change a Program” menu appears.



- ⑤ The “Confirm Uninstall” appears.
 - Click [Uninstall] to uninstall the driver.
 - The uninstallation starts.

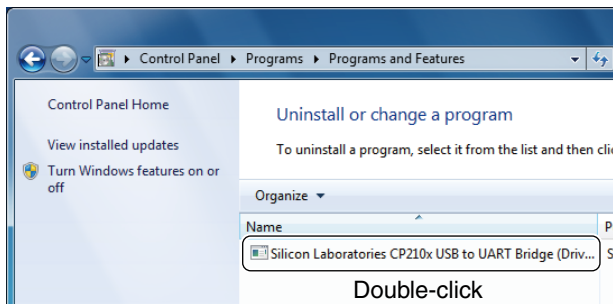


- ⑥ After the uninstall has completed, click [OK].
 - Restarting the PC is recommended.



- ④ Double-click “Silicon Laboratories CP210x USB to UART Bridge (DriverRemoval).”

When “User Account Control” dialogue box appears, click [Continue].



Audio considerations

[Installed audio player] (Windows standard software, etc.)

For modulation input from the PC, the transceiver’s USB port must be selected as the modulation input source connector.

You can set the modulation input source connector in the Set mode, or using the CI-V system. See the appropriate page in the transceiver’s instruction manual for details.

Please read the instruction manual that comes with the software for details, if you monitor the PC’s received audio from an external PC speaker, or use the audio from an external PC microphone as the modulating input.