

Contact author:  
NICK iKONOMOV - LZ1JY

By LZ1JY

TS590S spike

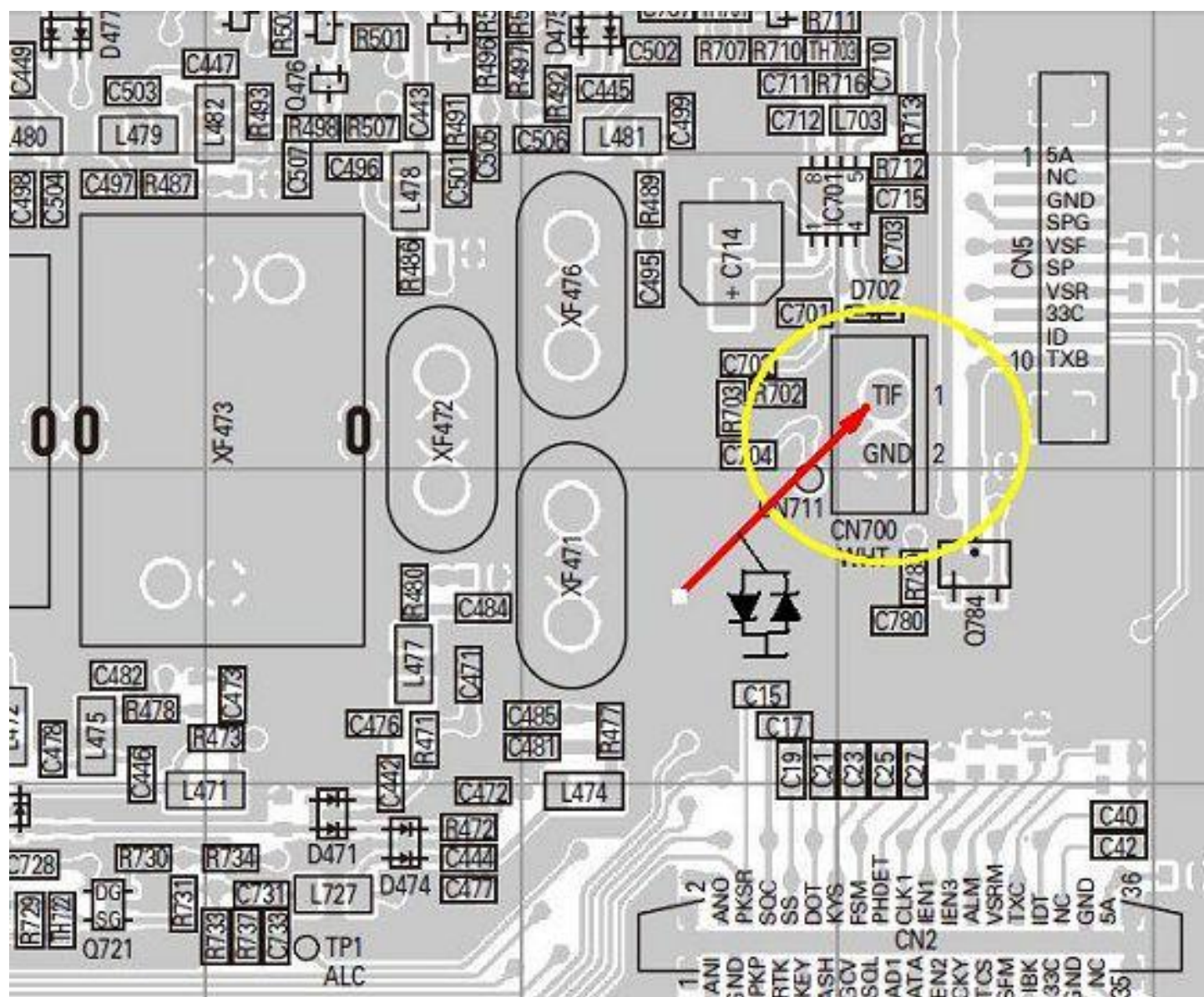
Kenwood mode

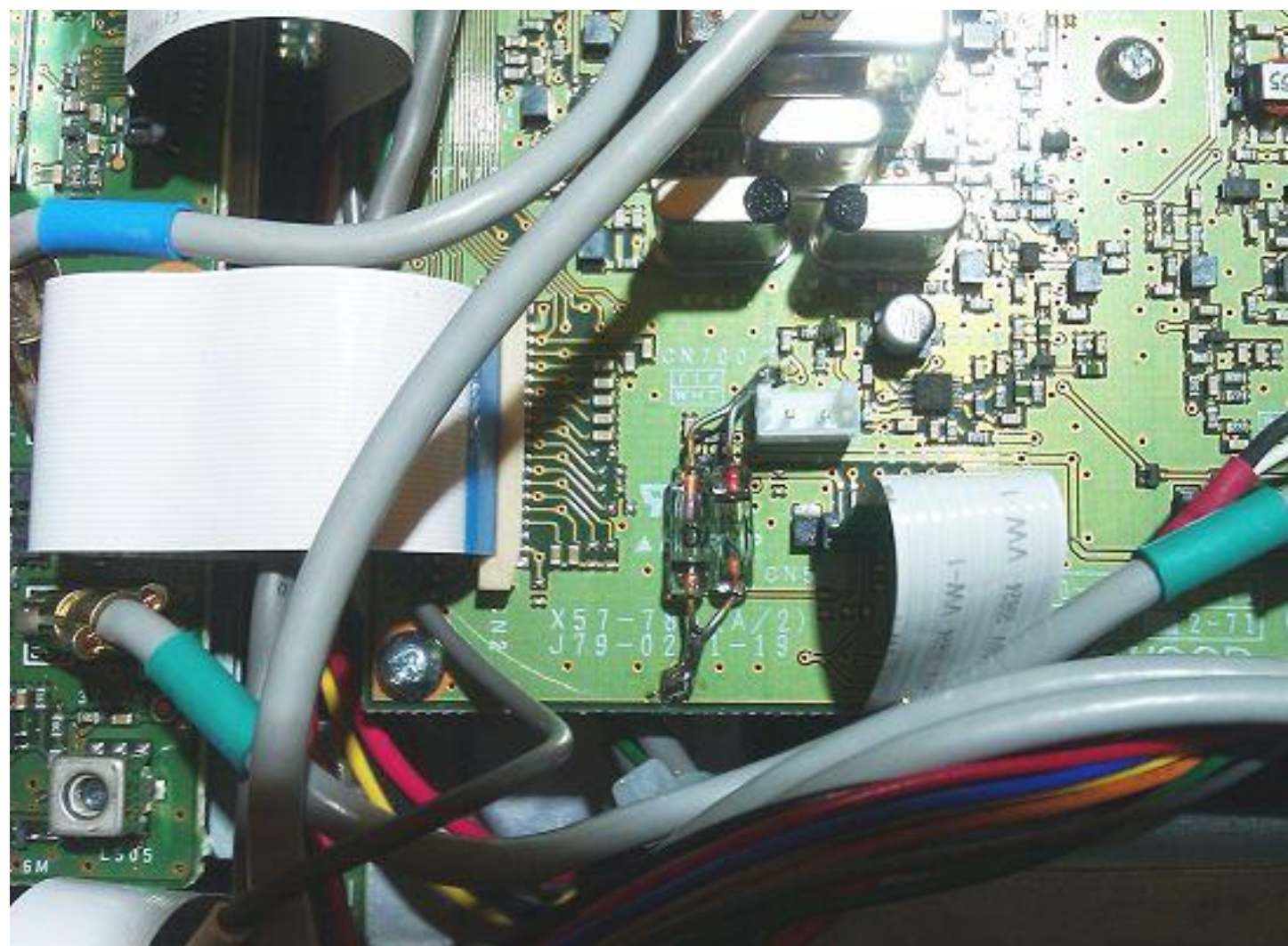
TS590s radio was released with a number of careless problems, one of a majors is a short , but annoying and dangerous spike of power , when goes on transmit.

My experienced friend LZ5JF investigated all problems and came with conclusion, that the most boring and costly was excessive power final and driver transistors overload, when switching rx-tx. Simplest mod is adding a level limiter before amplifiers for all types of tx modes- ssb, cw , etc.

Locate on the bottom side of the radio , some 5-6 cm from main encoder, look for CN700 on X57-785-XX. unit.

Add 2 Germanium diodes as shown on the LAST picture , soldered between TP711 pin and ground - DONE!









CN700

TIF  
WHT

CN5

X57-78 (A/2)  
J79-02 1-19

73 Nick LZ1JY

On behalf of Mitko LZ5JF

---

-----Original Message-----

From: lz1jy@dir.bg [mailto:lz1jy@dir.bg]

Sent: Tuesday, February 17, 2015 3:07 AM

To: Jeff King

Subject: Re: Spike on TX on Kenwood TS-590. Request for just more information

hI JEFF,

The diodes are any type with barrier about 0.4v , shotky are good as well. As PA on the 590s is not ALC included , it is very easy to see the effect of the limiter - spike drop twice and PTT clicks on full proc and mike at 100% are showing on memory scope up to 125watts max/ we used OA1180 diodes , but any type will work. Softer effect is when you use cap of 100nF in series with diodes, but just the diodes are fine.

At least it is not 240Watts pick.

73! nNick

---

On Sun, 15 Feb 2015 18:16:47 +1300

"Jeff King" <jking2603@gmail.com> wrote:

Hi Nick,

Thanks for your mod on dk.mods.

The LZ5JF mod looks easy enough to do.

Can you please help with the following.

Is there any before and after testing that has been done to verify the effect of the modification.

What is germanium diode that has been used in the modification.

Really look forward to your reply.

Yours sincerely ZL4AI

